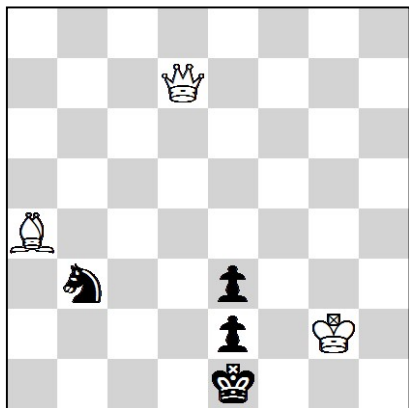


# OPEN tournament CFD for solving

Russia, Tula 18.02.2022 - (180')

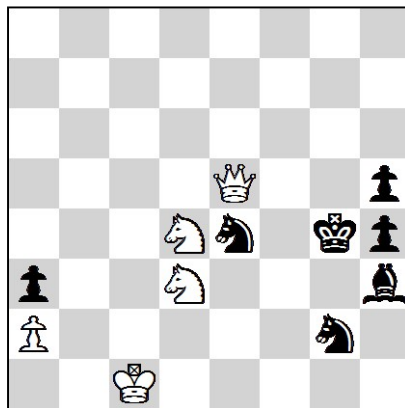
1.



#2

3 + 4

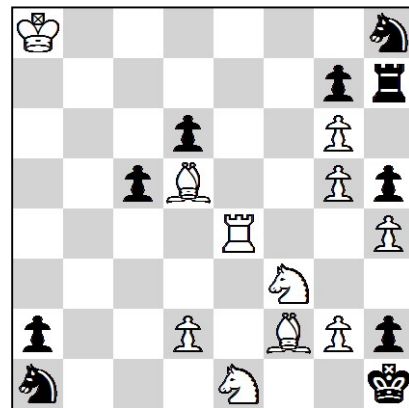
2.



#2

5 + 7

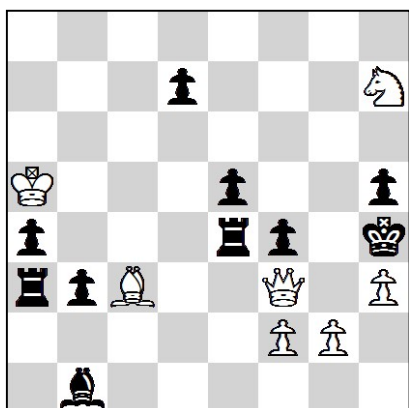
3.



#3

11 + 10

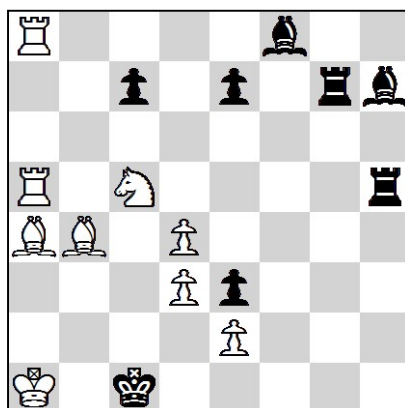
4.



#3

7 + 10

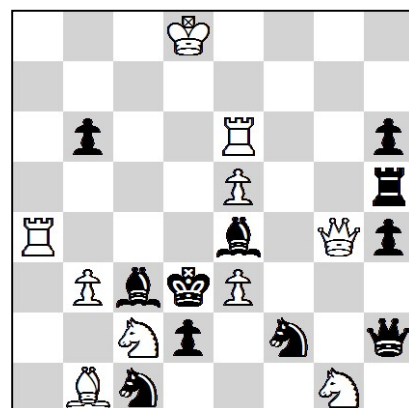
5.



#4

9 + 8

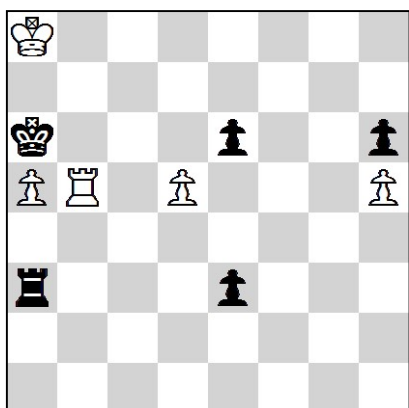
6.



#4

10 + 11

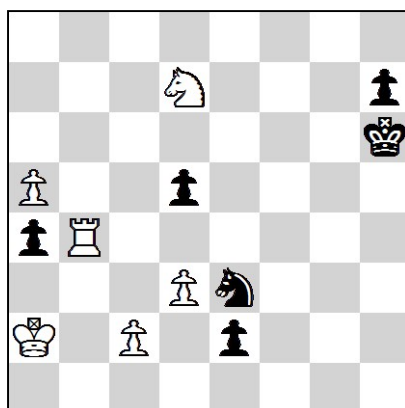
7.



+

5 + 5

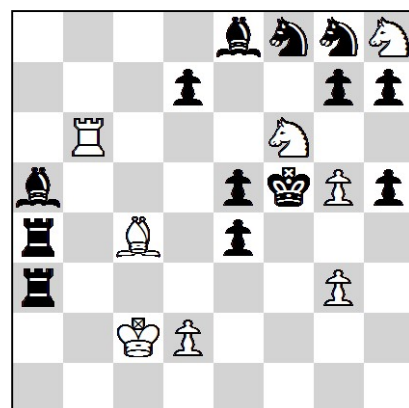
8.



+

6 + 6

9.

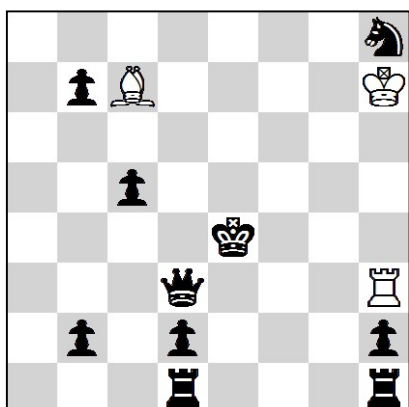


H#2

4 solutions

8 + 13

10.

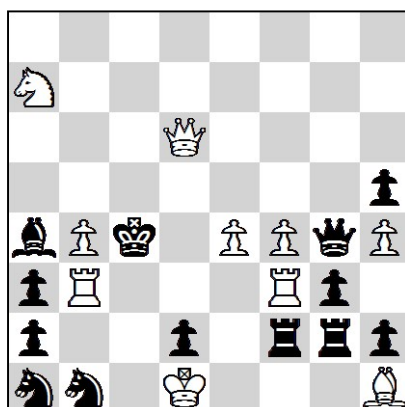


H#3

4 solutions

3 + 10

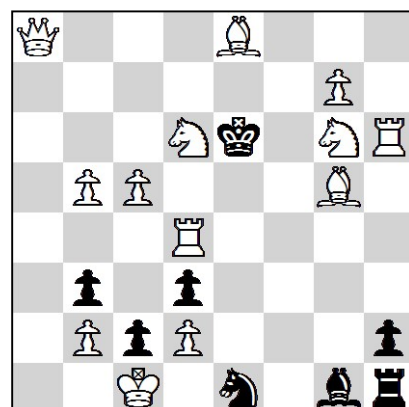
11.



S#2

10 + 13

12.



S#3

13 + 8