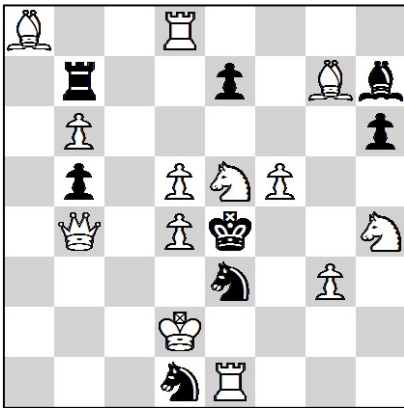


# Open of the personal chess championship of the CFD of Russia

Russia, Kaluga 15.03.2022 - (180')

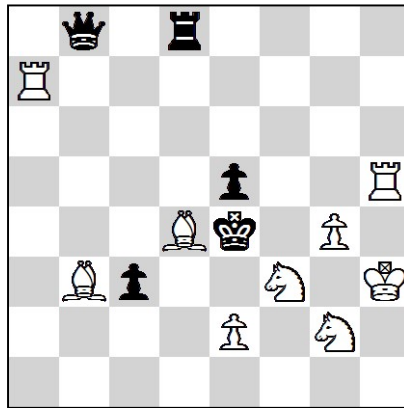
1.



#2

13 + 8

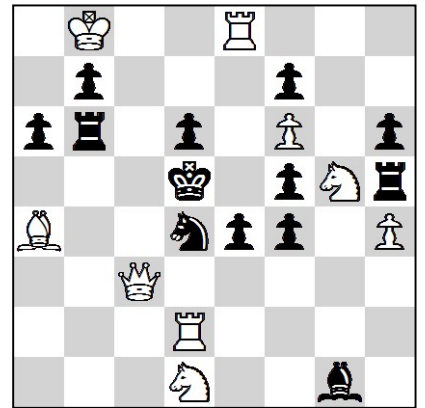
2.



#2

9 + 5

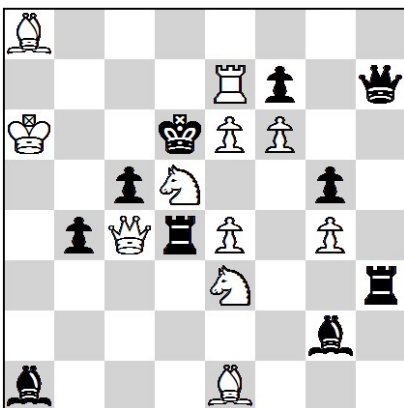
3.



#3

9 + 13

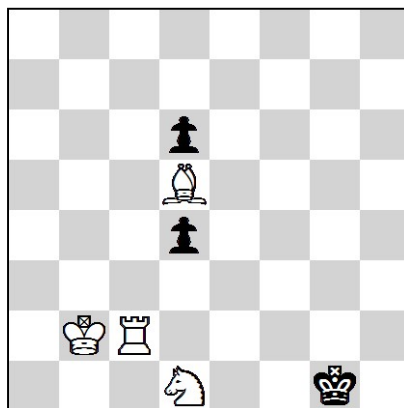
4.



#3

11 + 10

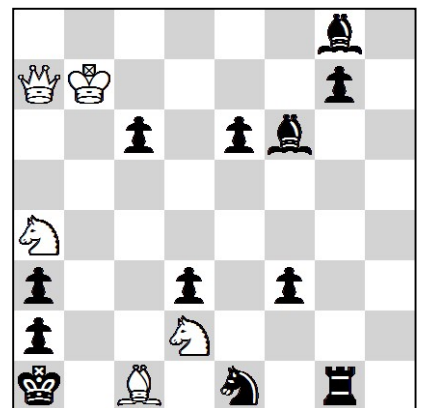
5.



#4

4 + 3

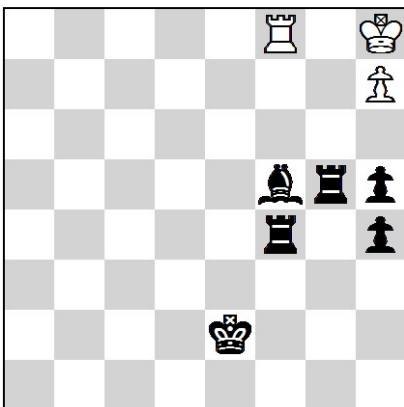
6.



#4

5 + 12

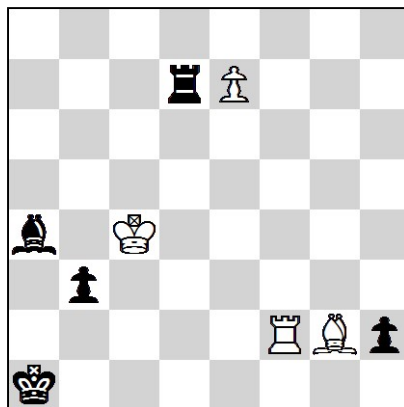
7.



=

3 + 6

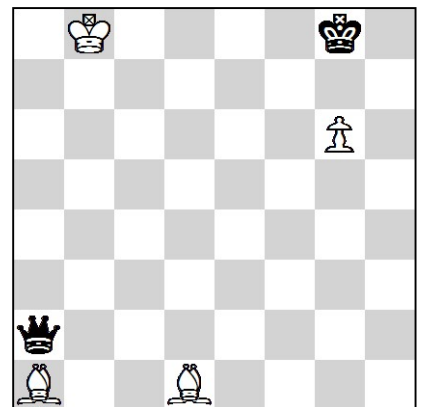
8.



+

4 + 5

9.

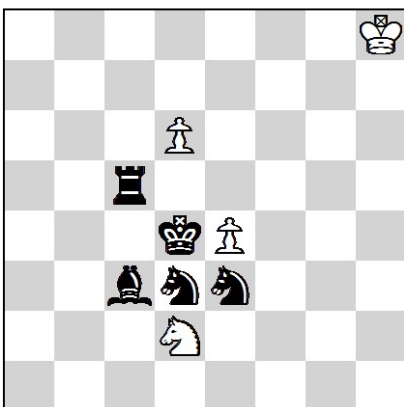


H#2

2 solutions

4 + 2

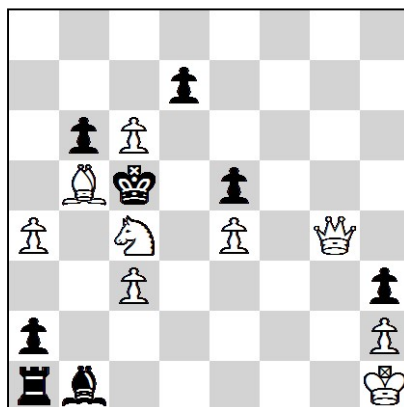
10.



H#3

4 + 5

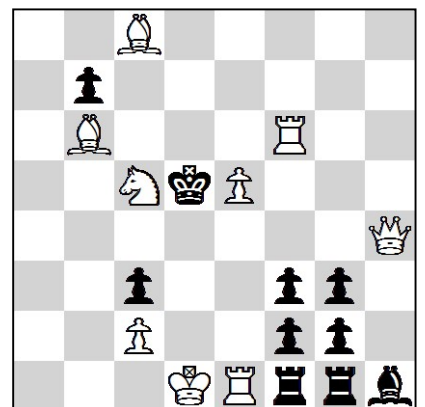
11.



S#2

9 + 8

12.



S#3

9 + 10