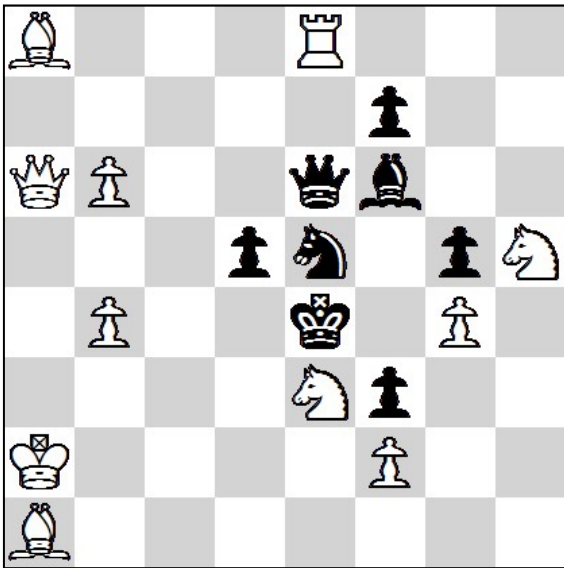


48th Latvian Chess Solving Championship 2022

23.04.2022 - Round 1. (90')

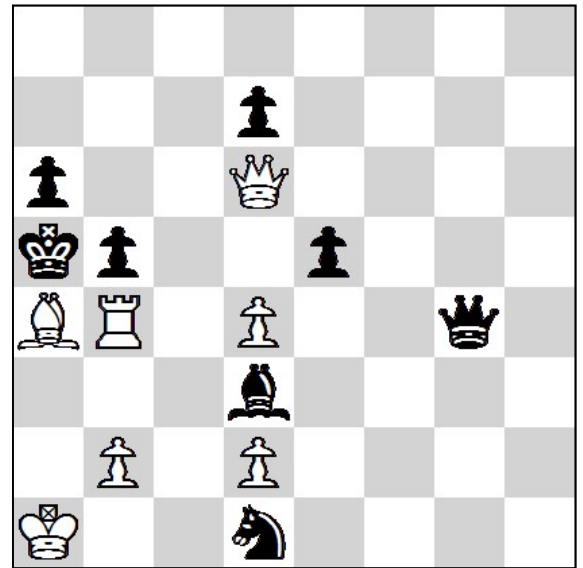
1.



#2

11 + 8

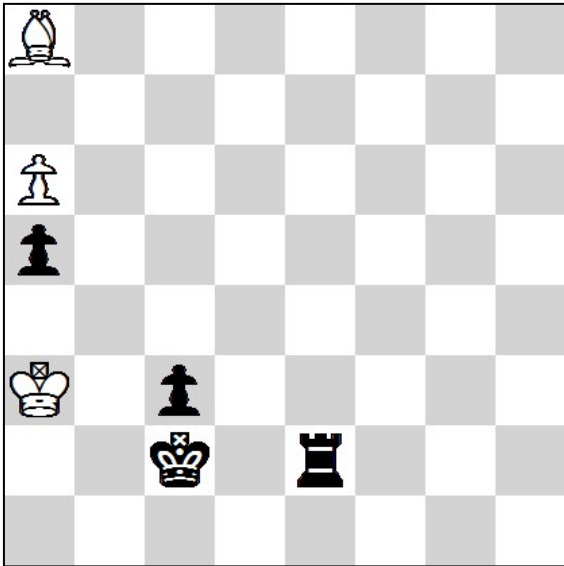
2.



#3

7 + 8

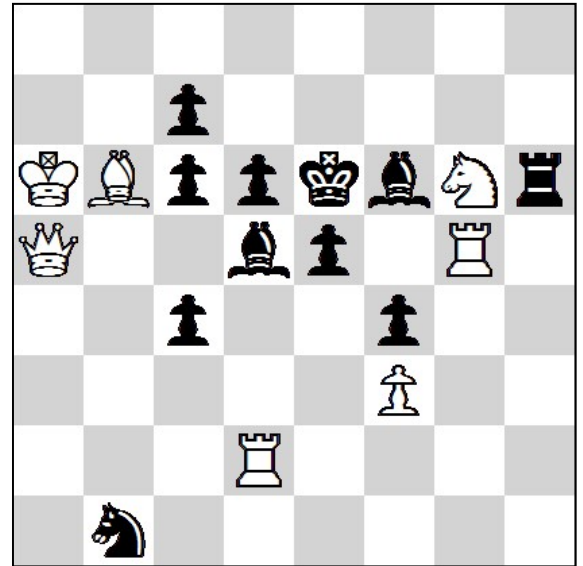
3.



=

3 + 4

4.

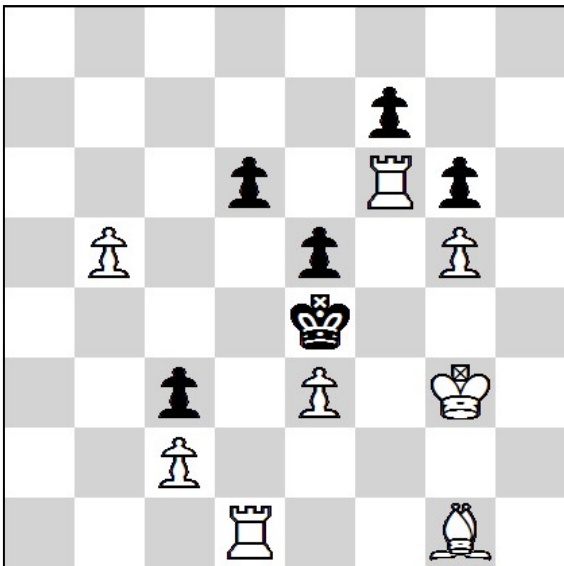


h#2

b) ♖f3->g4
(2.5 / 5)

7 + 11

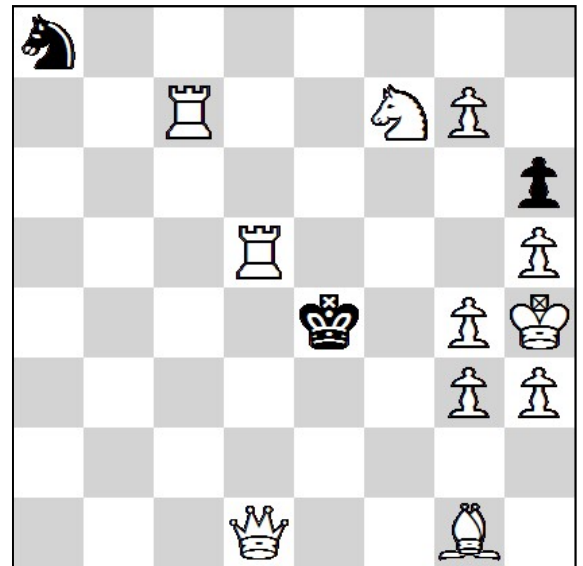
5.



#4

8 + 6

6.



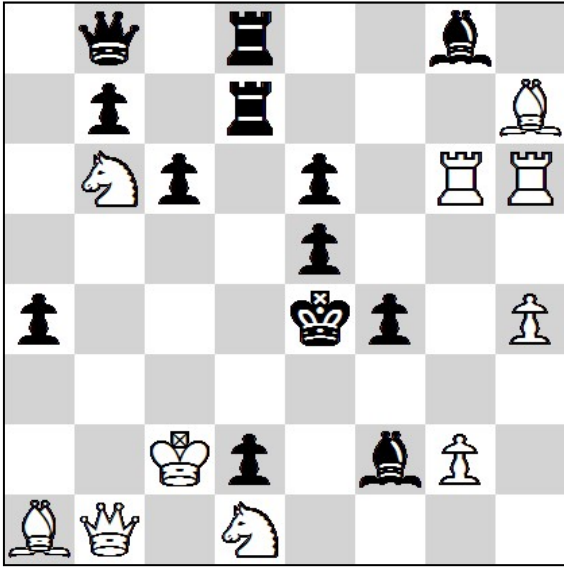
s#4

11 + 3

48th Latvian Chess Solving Championship 2022

23.04.2022 - Round 2. (90')

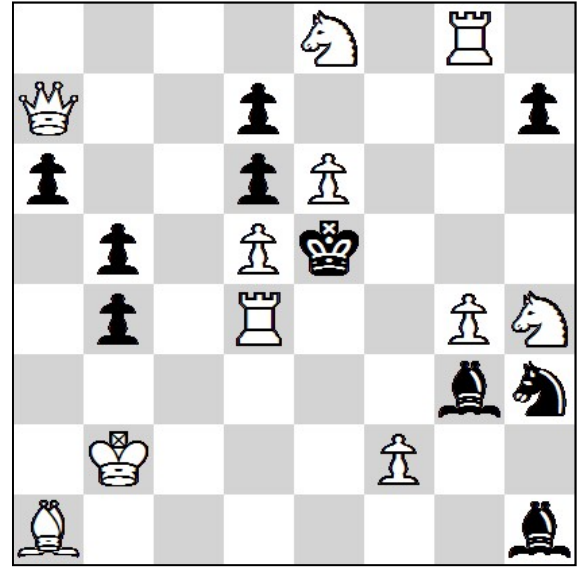
7.



#2

10 + 13

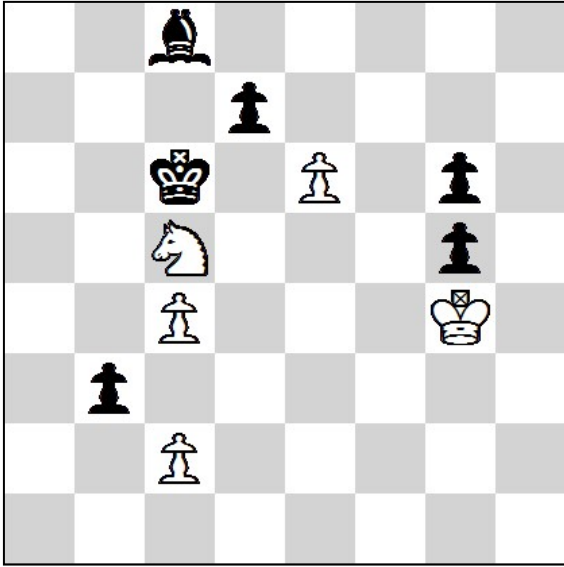
8.



#3

11 + 10

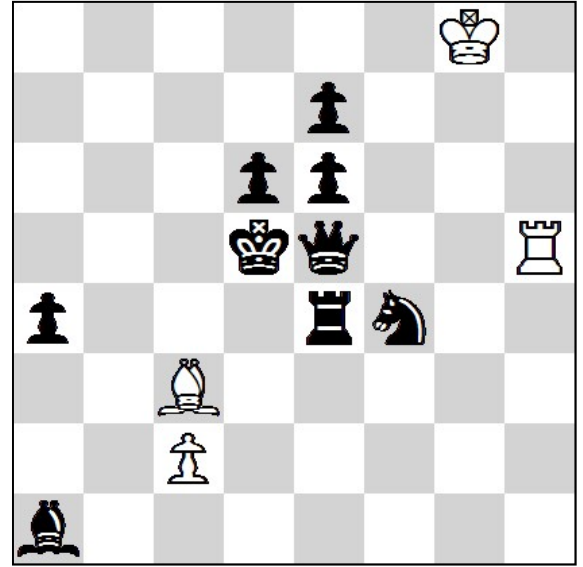
9.



+

5 + 6

10.

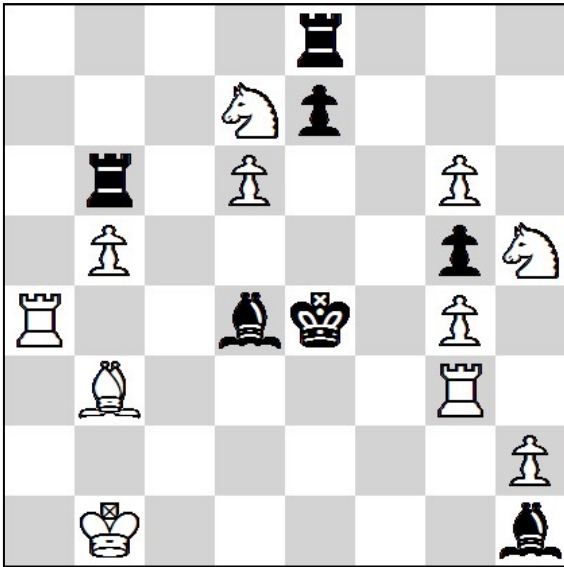


h#3

2 solutions
(2.5 / 5)

4 + 9

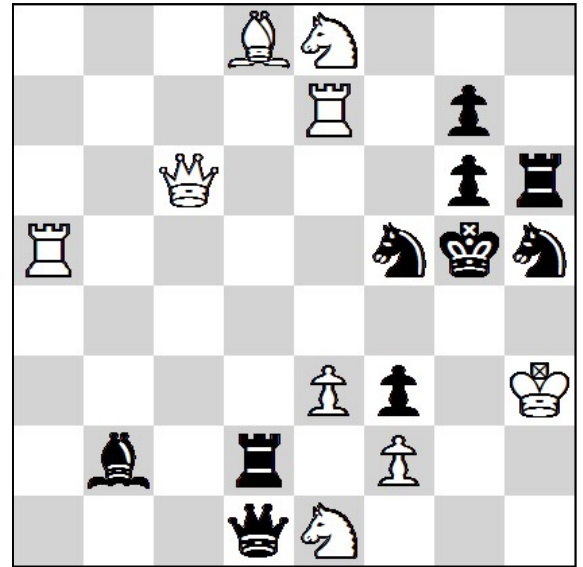
11.



#4

11 + 7

12.



s#2

9 + 10