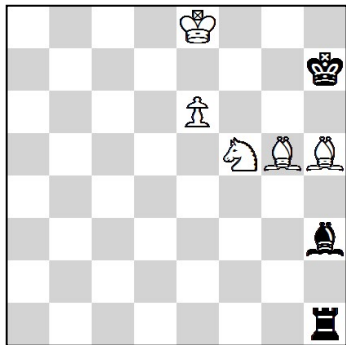


20th Greek Chess Solving Championship 2022

11.09.2022 - Round 1. (120')

4.

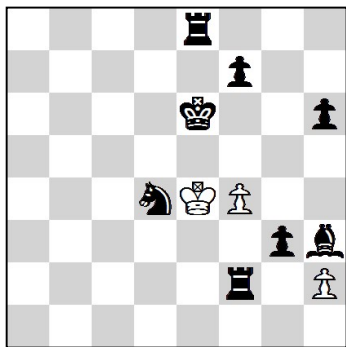


+ 5 + 3

S Tkachenko (original) after Amelung ,
Original for Greek Chess Solving Championship 2022

1. ♖d4! [1] 1... ♙xe6! 2. ♙f3 ♖e1
 3. ♙d2! [2] 3... ♖e5 4. ♙f4! ♖e1 5. ♘xe6! [3]
 ♖xe6+ 6. ♙f7 ♖e1 7. ♙g4! [4]
 7... ♙h8! 8. ♙f5! [5]
 8... ♖e2 9. ♙g5 ♖f2 10. ♙f6‡.
 [1. ♘g3? ♖g1! 2.e7 ♖xg3]
 [1... ♙f5 2. ♙f3! ♙g6+ 3. ♙d7 ♖e1 4.e7;
 1... ♖g1 2. ♘f3! ♖a1 3.e7 ♙g7 4. ♙d8 ♖a8+
 5. ♙c7 ♙g2 6. ♘e5]
 [2... ♖f1 3. ♙e4+ ♙f5 4. ♘xf5!]
 [7... ♖f1 8. ♙f5+ ♙h8 9. ♙e5‡;
 7... ♖e4 8. ♙f5+ ♙h8 9. ♙g5(h6)]

5.



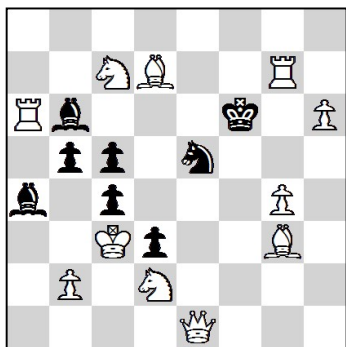
H#5 3 solutions 3 + 8

E. Manolas
Original for Greek Chess Solving Championship 2022

1. ♙h3-f5 ♙e4-e3 2. ♙f5-g6 ♘h2*g3 3. ♙e6-f5+ ♙e3*f2
 4. ♘d4-e6 ♙f2-f3 5. ♙f7-f6 ♙g3-g4‡ @
 1. ♙e6-e7 ♙f4-f5 2. ♘d4-e6 ♙f5*e6 3. ♙e7-f6 ♙e6-e7
 4. ♖e8-g8 ♙e7-e8= ♙ 5. ♖g8-g6 ♙e8-e5‡ @
 1. ♘d4-f3 ♙e4-d3 2. ♘f3-g5 ♙f4*g5 3. ♙e6-e7 ♙g5*h6
 4. ♙e7-f8 ♙h6-h7 5. ♖e8-e7 ♙h7-h8= ♙ ‡ @

@	1	2	3
Pts.	1,5	3,5	5

6.



S#3 11 + 8

M Calageorgi
La strategie 1894

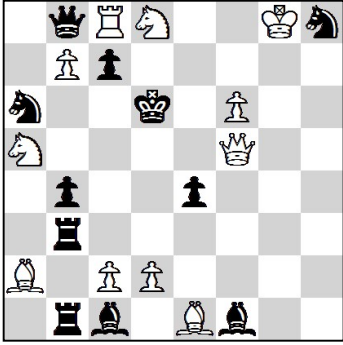
1. ♙e1-e3! [2.. ♖a6*b6+ ♙e5-c6 3. ♙e3-d4+] @
 1... ♘e5-f3 2. ♙e3-g5+ ♙f3*g5 3. ♘d2-e4 + @
 1... ♘e5*g4 2. ♙e3-f2 + ♙g4*f2 3. ♘d2-e4 + @
 1... ♘e5-g6 2. ♙e3-e7 + ♙g6*e7 3. ♘c7-d5 + @
 1... ♘e5-f7 2. ♙e3-g5 + ♙f7*g5 3. ♘d2-e4 + @
 1... ♘e5-c6 2. ♙e3-e7 + ♙c6*e7 3. ♘c7-d5 + @

@	1	2	3	4	5	6
Pts.	1	2	2,5	3	4	5

20th Greek Chess Solving Championship 2022

11.09.2022 - Round 2. (120')

7.



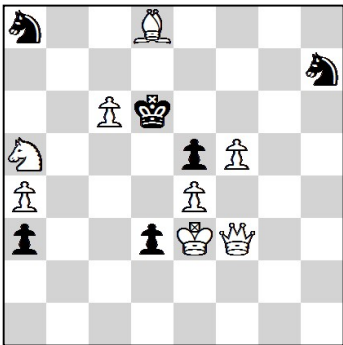
#2 11 + 11

P Murashev
SuperProblem 2014

1. ♖e1-f2! @

@	1
Pts.	5

8.



#3 8 + 6

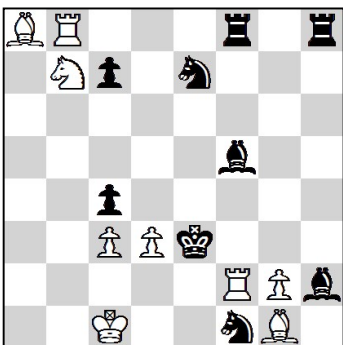
G Laws
Sheffield Independent 1887

1. ♖f3-f4! threat
1... ♗e5*f4+
1... ♞a8-b6

2. ♖f4*e5 + @
2. ♔e3-d4 @
2. ♖f4-h6 + @

@	1	2	3
Pts.	1,5	3,5	5

9.



#6 9 + 9

E Manolas
Original for Greek Chess Solving Championship 2022

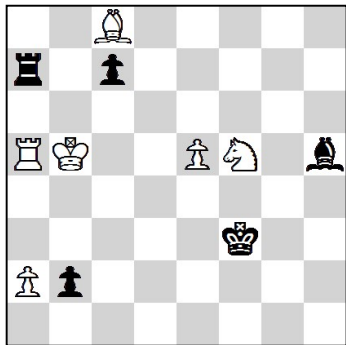
1. ♔d1! [2. ♖f3♯]
1... ♗xd3 2. ♖f3+ ♔e4 3. ♞c5+ ♔e5 4. ♗d4+ ♔d6 5. ♖d8+ @
1... ♔xd3 2. ♞c5+ ♔xc3 3. ♖f3+ ♗e3+ 4. ♖xe3+ ♔d4 5. ♖e4+ @
♗d3 5. ♞a4+ @

@	1	2	3
Pts.	1,5	3,5	5

20th Greek Chess Solving Championship 2022

11.09.2022 - Round 2. (120')

10.



= 6 + 5

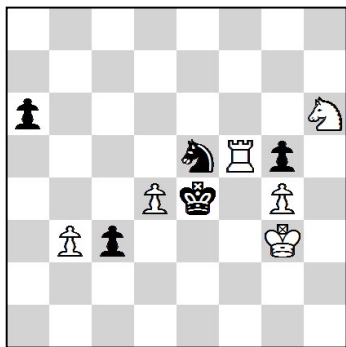
M Pasma

Original for Greek Chess Solving Championship 2022

1. ♖d4+! [1] 1... ♔e3 2. ♖c2+! [2]
 2... ♔e4 3. ♖a3 ♘e8+ 4. ♖b4 c5+!
 5. ♗xc5 ♗xa3! 6. ♗c4+! [3] ♔xe5 7. ♗e4+! [4]
 7... ♔xe4 8. ♖xa3 b1 ♗ 9. ♘f5+! [5]
- [1. ♖h4+ ♔e3 2. ♘f5 ♘e2+]
 [2. ♘f5 ♘e8+! 3. ♖b4 ♗xa5 4. ♖xa5 ♔xd4]
 5. ♖b4 ♘f7 6. ♖a3 ♔c3-+]
 [2... ♖d2 3. ♖a3 ♘e8+ (3... Rxa5+ 4. ♖xa5)
 4. ♖b4 c5+ 5. ♗xc5 ♗xa3 6. ♘f5;
 2... ♔f4 3. ♖a3 ♘e8+ 4. ♖b4 c5+!
 5. ♗xc5 ♗xa3 6. ♗c4+ ♔g5 7. ♗g4+ ♔h5 8. ♗g1]

@	1	2	3	4	5
Pts.	1	2	3	4	5

11.



H#3 2 solutions 6 + 5

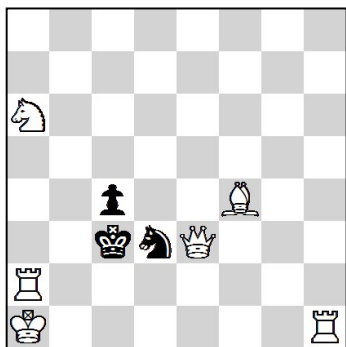
C Jones

Original for Greek Chess Solving Championship 2022

1. ♖e5-d3! ♗f5-b5 2. ♔e4*d4 ♔g3-f3 3. a6-a5 ♘h6-f5 ‡ @
 1. ♖e5*g4! ♗f5*g5 2. ♖g4-f2 ♔g3*f2 3. ♔e4-f4 ♗g5-g4‡ @

@	1	2
Pts.	2,5	5

12.



S#8 6 + 3

Steven B. Dowd and Henry Tanner

Original for Greek Chess Solving Championship 2022

1. ♗a3+! ♔c2 2. ♔e4 c3 3. ♗a5 ♔b3 4. ♔d5+ ♔c2
 5. ♖b4+ ♖xb4 6. ♗a2+ ♖xa2 7. ♗b1 ♖b4/c1 8. ♗b2+ [5]

@	1
Pts.	5