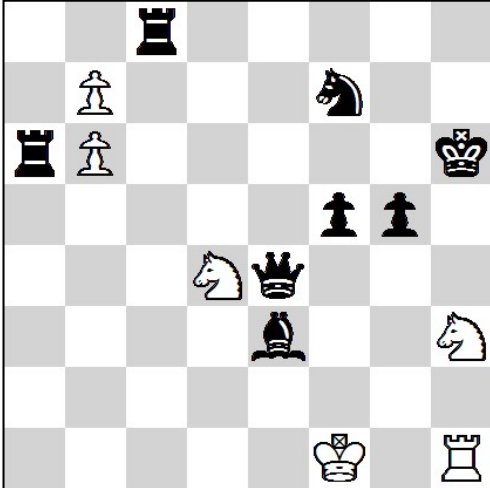


Fairy Chess Solving Championship 2023

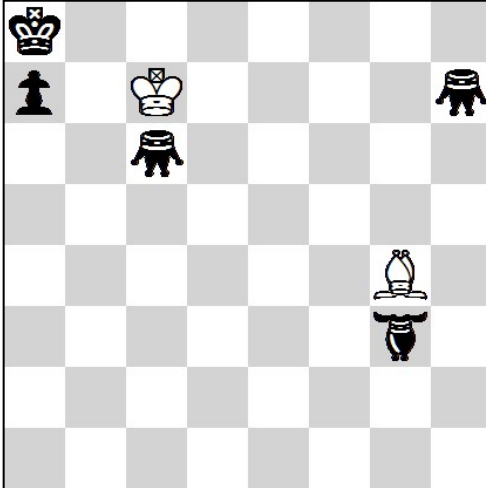
Georgia, Batumi 03.09.2023 - Round 1. (120')

1.



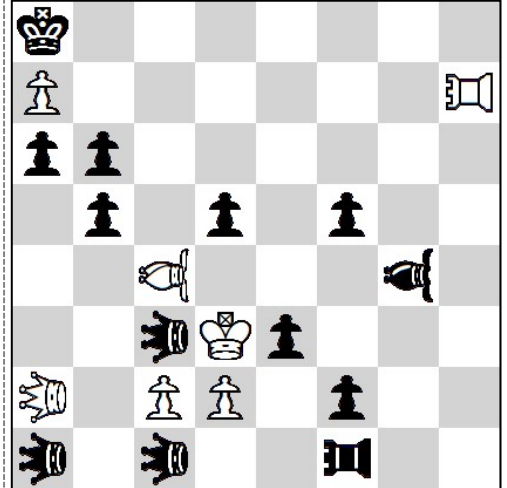
#4 Functionary chess 6 + 8

2.



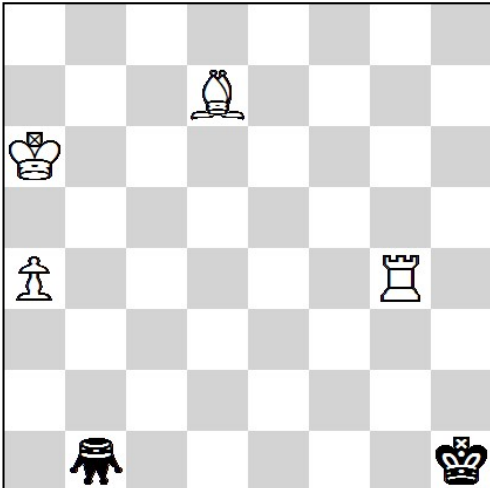
h#2 Take&Make 2 + 5
♞ = Bishopopper ♟ = Grasshopper

3.



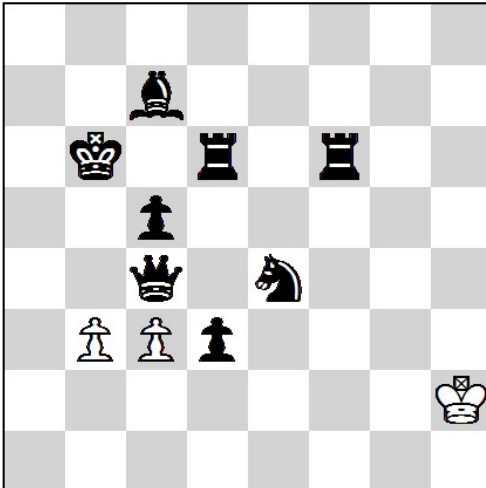
hs#3 b) Pc2->d4 7 + 13
♞♟ = Leo ♞♟ = Pao ♞♟ = Vao

4.



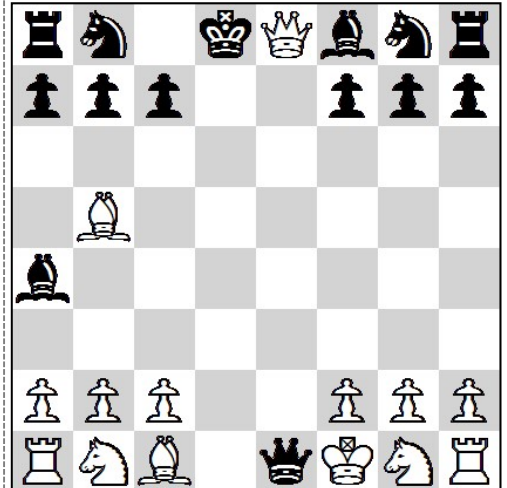
s#9 Maximummer 4 + 2
♟ = Grasshopper

5.



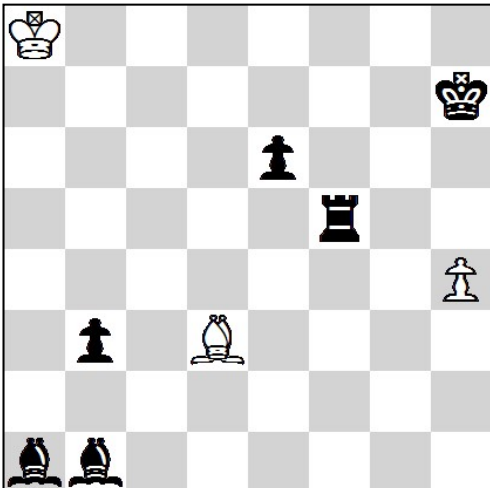
ser.h #8 2 Sol. 3 + 8

6.



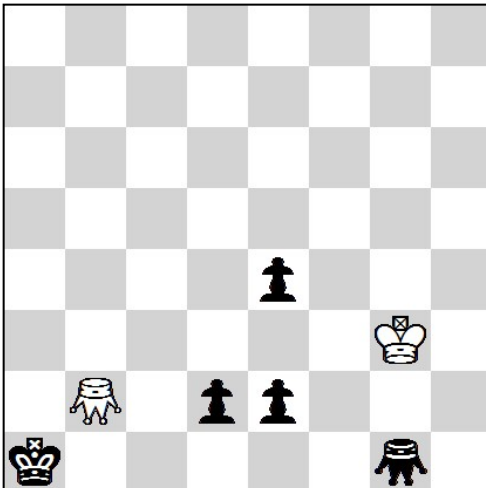
PG 8.0 Proof Game in 8.0 moves 14 + 14
Madras chess

7.



h#4 2 sol. 3 + 3
Circe

8.

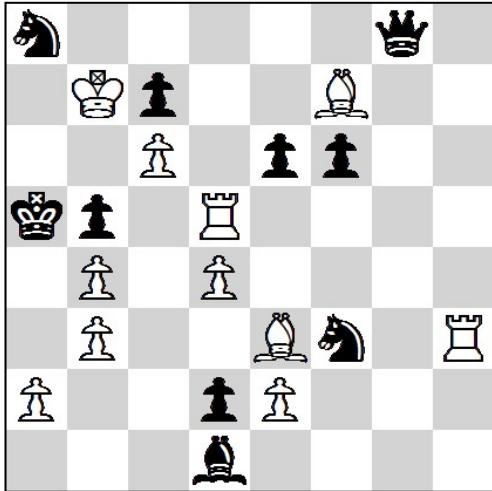


ser.h #12 7x7 board (a-g,1-7) 2 + 5
♞♟ = Grasshopper

Fairy Chess Solving Championship 2023

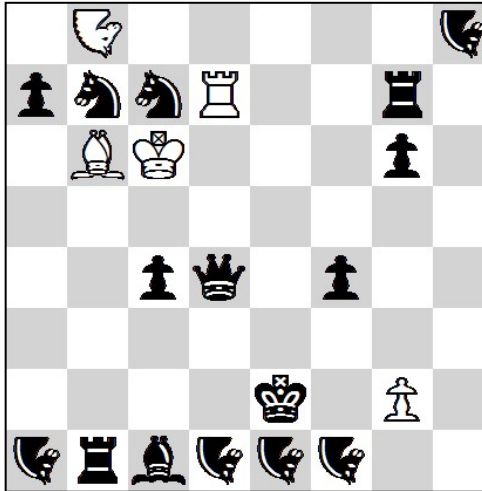
Georgia, Batumi 03.09.2023 - Round 2. (120')

9.



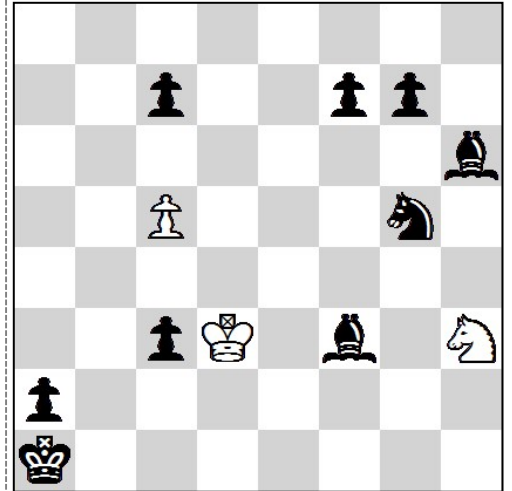
#2 Patrol chess 11 + 10

10.



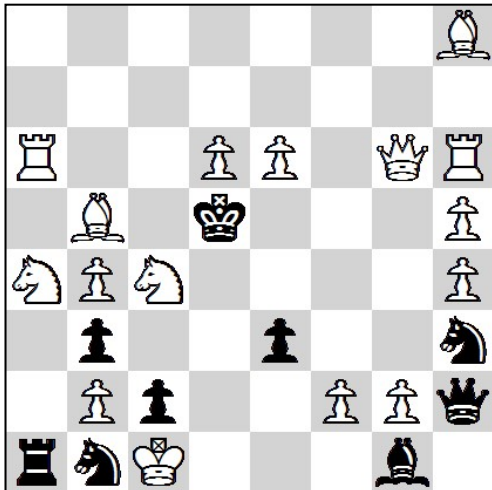
h#2 4 sol. 5 + 16
♞♞ = Nightrider

11.



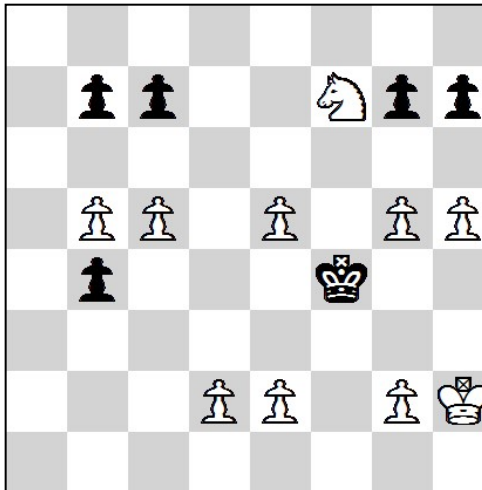
hs#5 2 sol. 3 + 9

12.



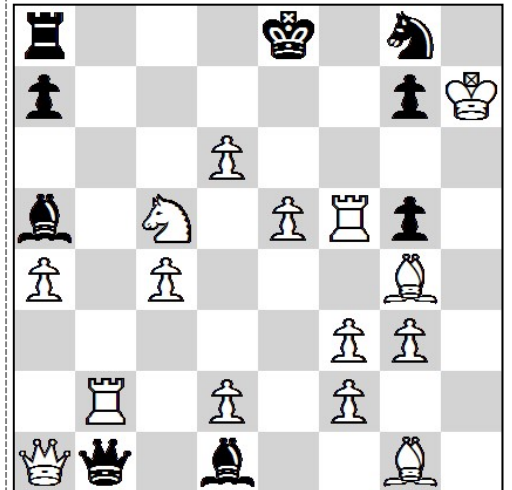
s#2 Sentinetal 16 + 9

13.



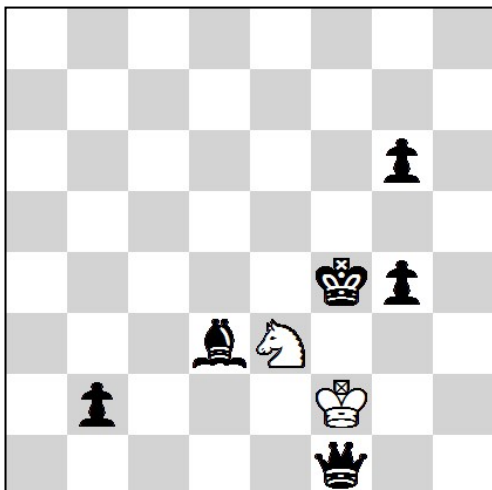
ser.h #27 Maximummer 10 + 6

14.



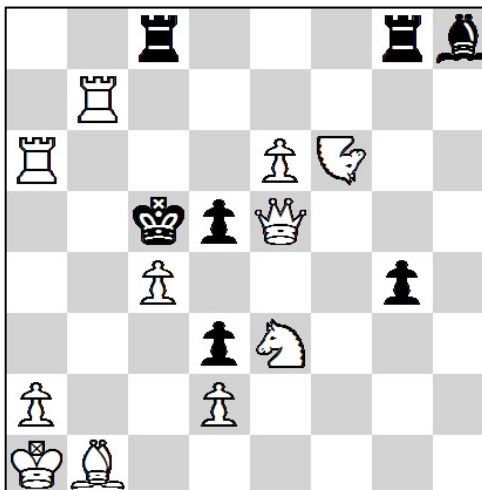
-1 & #2 white -1 & #2 15 + 9
the position should be legal

15.



h#3 2 sol. 2 + 6
Grid chess

16.



s#4 11 + 7
♞ = Nightrider