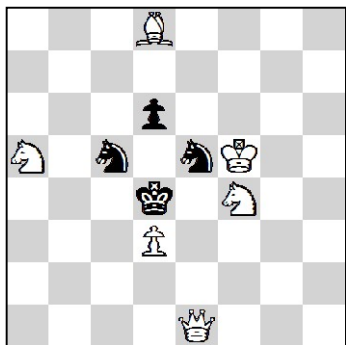


# Open tournament of Tula

Russia, Tula 02.01.2024 - Round 1. (90')

1.



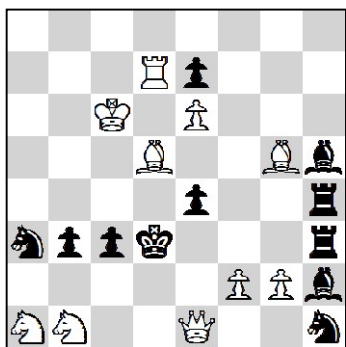
#2 6 + 4

Мельников, Владимир Григорович  
Europe Échecs, 1980

1. ♔ d2 [5.0]

YACPDB#:16764

2.



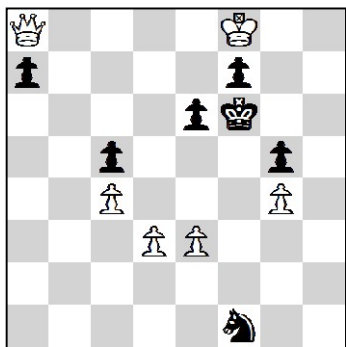
#2 10 + 11

Mansfield, Comins  
Die Schwalbe, 1956 1st Prize  
Die Schwalbe, Nov 1956

1. f3 [5.0]

YACPDB#:42696

3.



#3 6 + 7

Смыслов, Василий Васильевич  
Техника — молодёжи, Jan 1964

1. ♔ h1 > 2. ♔ h8 @  
1... ♘ h2 2. ♔ a1 @  
1... ♔ e5 2. ♔ e7 @

@	1	2	3
Pts.	1.5	3.5	5

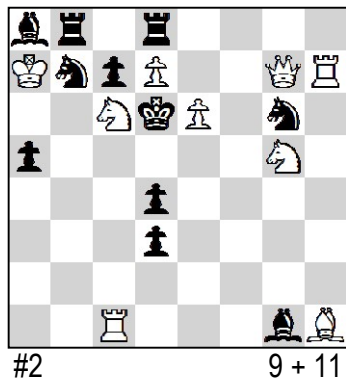
YACPDB#:307700



# Open tournament of Tula

Russia, Tula 02.01.2024 - Round 2. (90')

7.

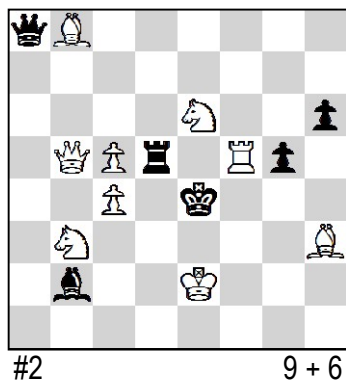


Урсегов, Яков Петрович  
 II командное первенство России 3rd Place  
 II командное первенство России, 1967

1. ♖:d4 [5.0]

YACPDB#:386335

8.

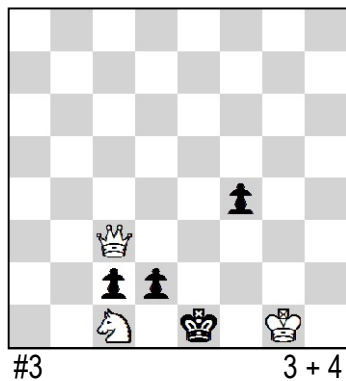


Феоктистов, Александр Фёдорович  
 Шахматная Москва, 1968 НМ  
 Шахматная Москва, 29 May 1968

1. ♖ed4 [5.0]

YACPDB#:325000

9.



Галицкий, Александр Васильевич  
 Шахматный журнал, Маг 1897 (936)

1. ♔h2

1... ♔d1    2. ♔d4    @  
 1... ♔f2    2. ♔:d2    @  
 1... f3      2. ♔e3    @

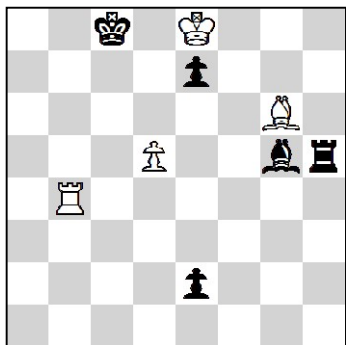
@	1	2	3
Pts.	1.5	3.5	5

YACPDB#:104468

# Open tournament of Tula

Russia, Tula 02.01.2024 - Round 2. (90')

10.



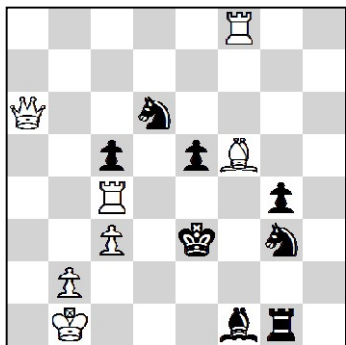
Бронштейн Давид, 1959

1. ♖f5+

- |           |         |         |       |
|-----------|---------|---------|-------|
| 1... ♔c7  | 2. ♖e4  |         | [1.0] |
| 2... ♗h4  | 3. ♖:e2 |         | [1.0] |
| 3... ♖:f5 | 4. ♖:e7 |         | [1.0] |
| 4... ♗:e7 | 5. d6   | ♔c8     | [1.0] |
| 7... ♗:d8 | pat     | 6. d7   |       |
|           |         | ♔c7     |       |
|           |         | 7. d8 ♗ |       |

= 4 + 5

11.



Abdurahmanović, Fadil

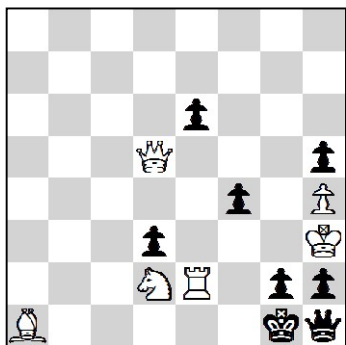
1st WCCT, 1972-1975 1st Place

- |        |     |        |      |       |
|--------|-----|--------|------|-------|
| 1. ♘f7 | ♗e4 | 2. ♔f4 | ♗h6‡ | [2.5] |
| 1. ♘b5 | ♖e4 | 2. ♔d3 | ♖d8‡ | [2.5] |

YACPDB#:43322

H#2 2 решения 7 + 8

12.



Паскалев, Иван

Уральский проблемист, 2012 4th Commendation

Уральский проблемист, 2012 (4-6/1260)

- |           |        |          |   |
|-----------|--------|----------|---|
| 1. ♗e5 zz | 1...de | 2. ♗:g2+ | @ |
|           | 1..ed  | 2. ♖:g2+ | @ |
|           | 1...f3 | 2. ♗:h2+ | @ |

S#2 6 + 8

@	1	2	3
Pts.	1.5	3.5	5

YACPDB#:511802