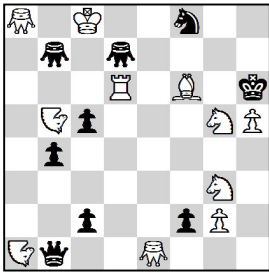


Fairy Solving at the ECSC 2024

Germany, Hagen 20.04.2024 - (90')

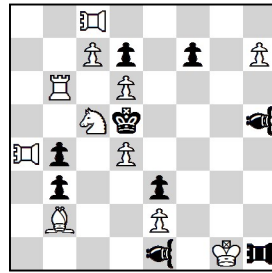
1.



#2 11 + 9

=Grasshopper
 =Nightrider

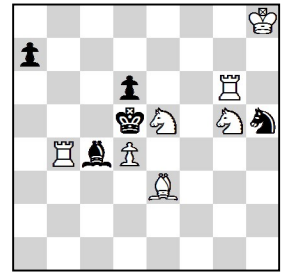
2.



#3 11 + 9

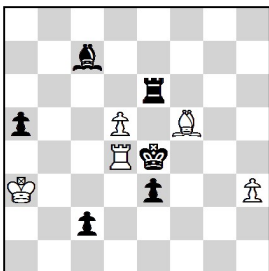
=Pao
 =Vao

3.



#5 Circe 7 + 5

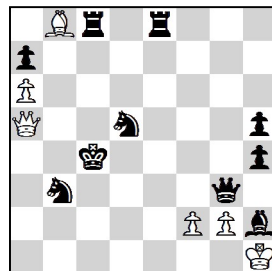
4.



h#2 5 + 6

- a) Diagram
b) ♖d5⇒c4
c) ♖d5⇒f2
d) ♖d5⇒f6
Patrol Chess
(1 / 2.5 / 4 / 5)

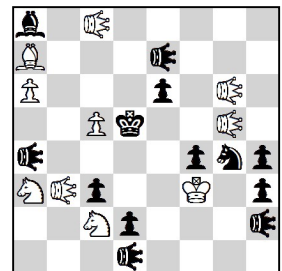
5.



h#3 6 + 10

2 Solutions
Madrasi

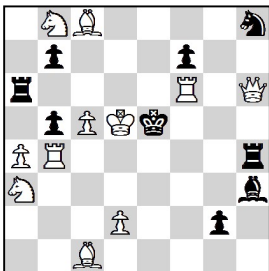
6.



s#2 10 + 13

=Locust

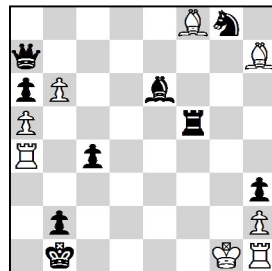
7.



s#3 11 + 9

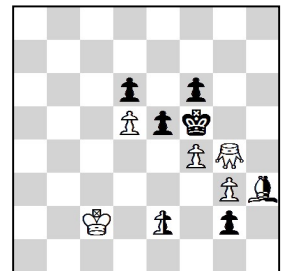
Madrasi Rex Inclu

8.



R#2 8 + 9

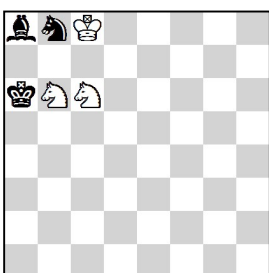
9.



ser-h#5 5 + 5 + 2

2 Solutions
h3=Chameleon
 =Grasshopper

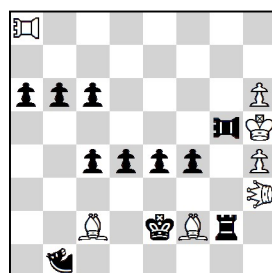
10.



hs#3 3 + 3

- a) Diagram
b) ♜a8=♜a8
PWC

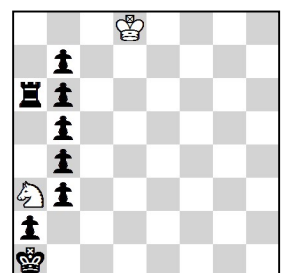
11.



hs#4 7 + 11

3 Solutions
 =Leo
 =Nao
 =Pao

12.



ser-h=17 2 + 8