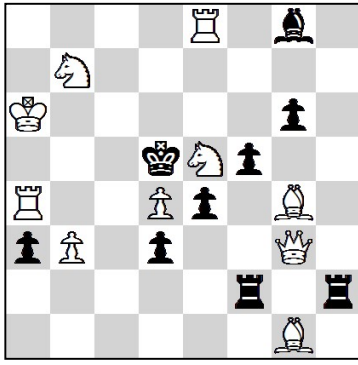


45th French Chess Solving Championship 2024

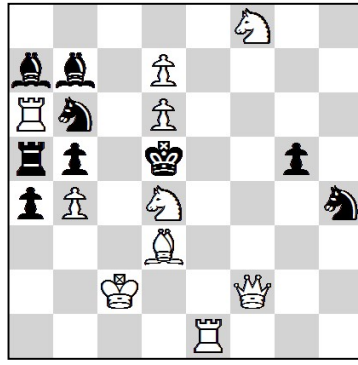
18.05.2024 - (150')

1.



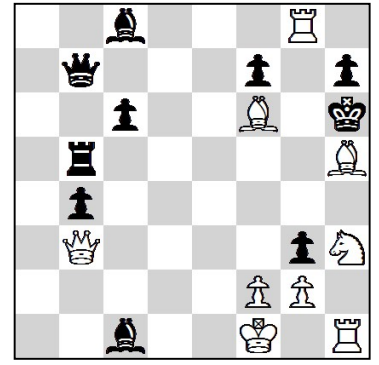
#2 10 + 9

2.



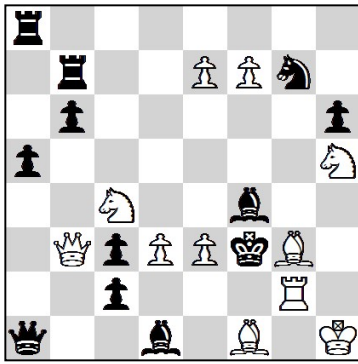
#2 10 + 9

3.



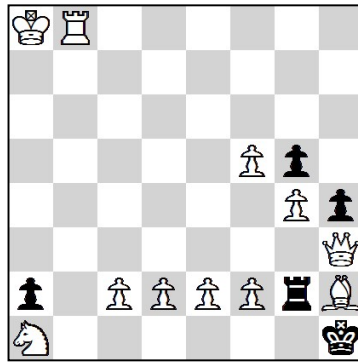
#3 9 + 10

4.



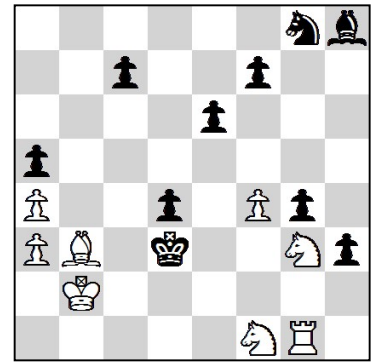
#3 11 + 12

5.



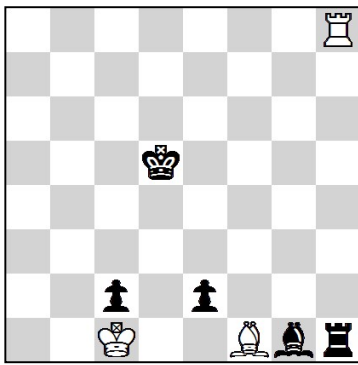
#4 11 + 5

6.



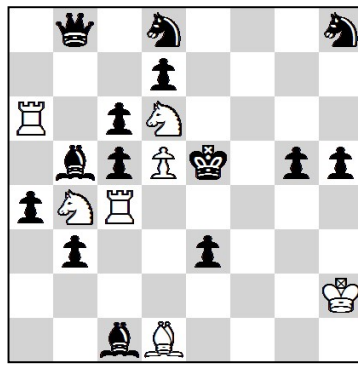
#6 8 + 10

7.



= 3 + 5

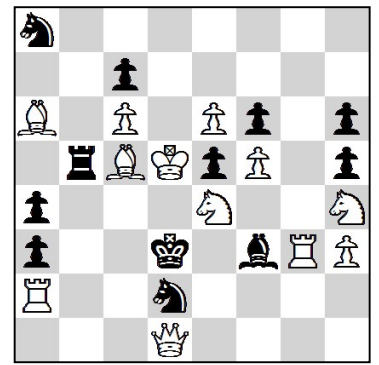
8.



h#2 7 + 14

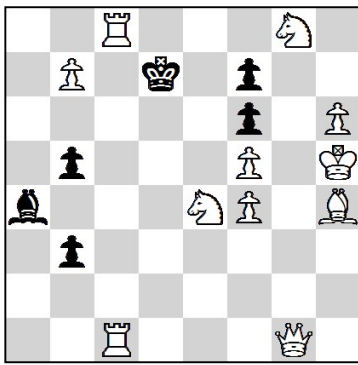
a) Diagram
b) ♖b4⇒h7
(2.5 / 5)

9.



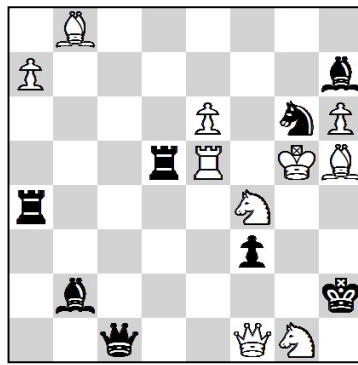
s#2 12 + 12

10.



s#5 11 + 6

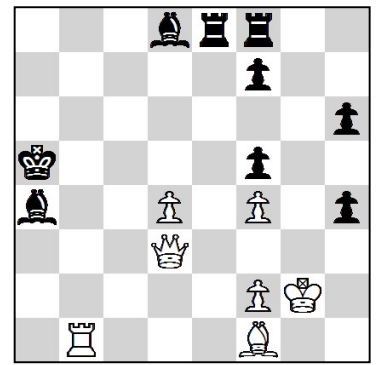
11.



hs#2.5 10 + 8

2 Solutions

12.



hs#4 7 + 9

a) Diagram
b) ♜a4=♜a4