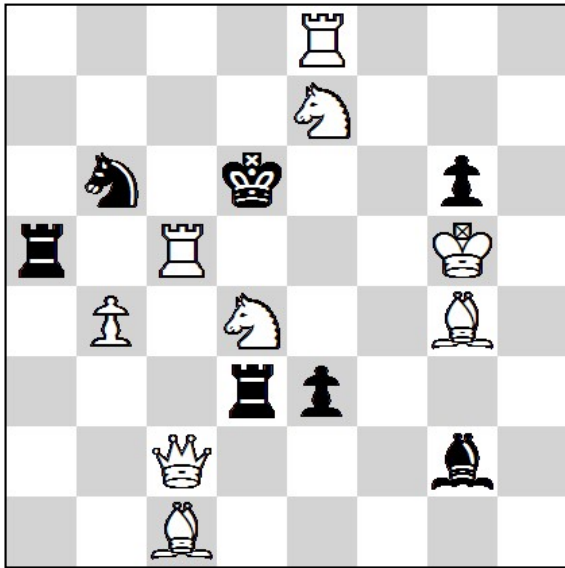


Open Solving Tournament of WCCC 2024

Latvia, Jurmala 29.07.2024 - Round 1. (90')

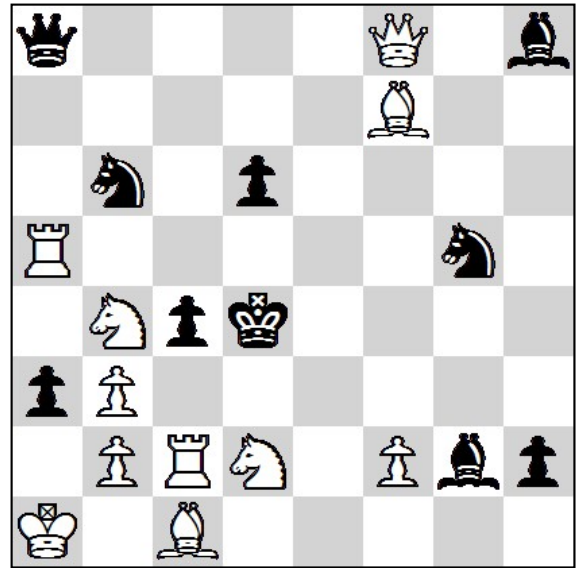
1.



#2

9 + 7

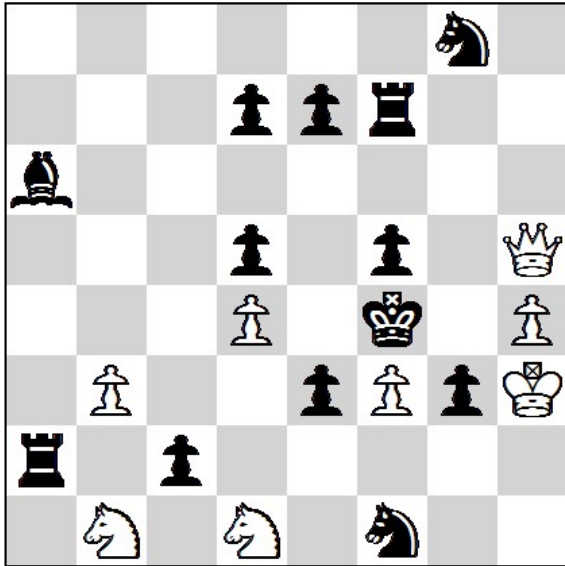
2.



#3

11 + 10

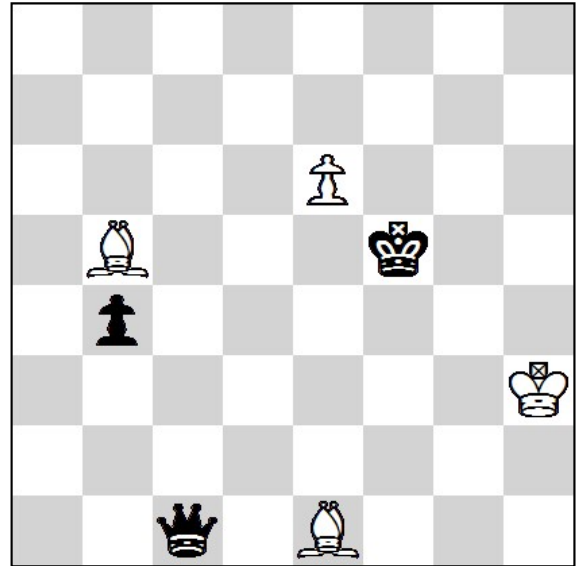
3.



#7

8 + 13

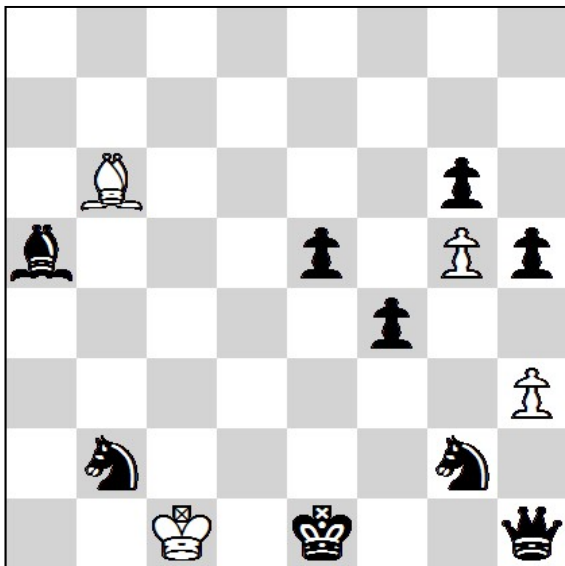
4.



=

4 + 3

5.

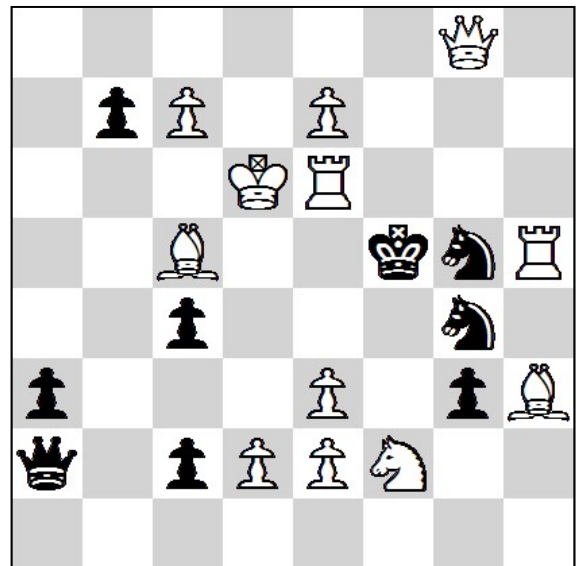


H#5

2 Solutions
(2.5 / 5)

4 + 9

6.



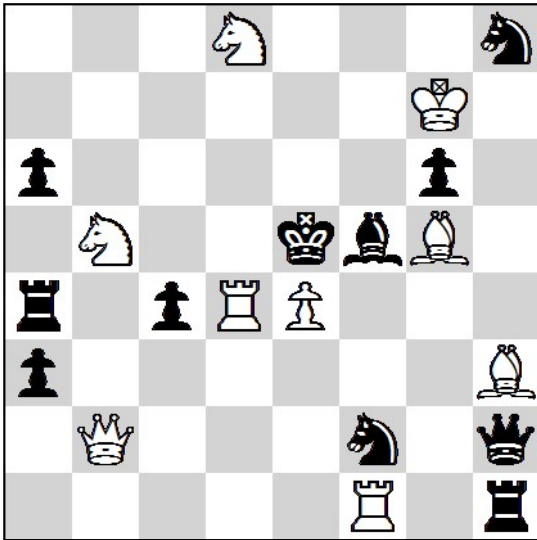
S#4

12 + 9

Open Solving Tournament of WCCC 2024

Latvia, Jurmala 29.07.2024 - Round 2. (90')

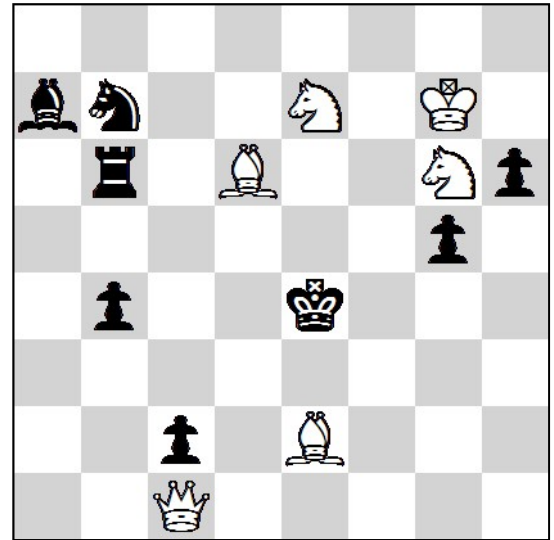
7.



#2

9 + 11

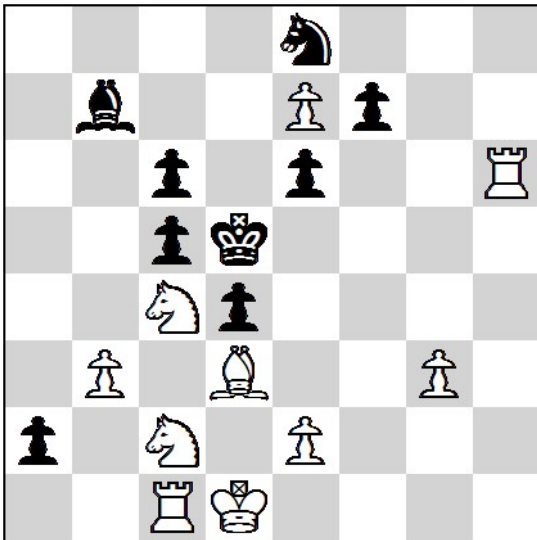
8.



#3

6 + 8

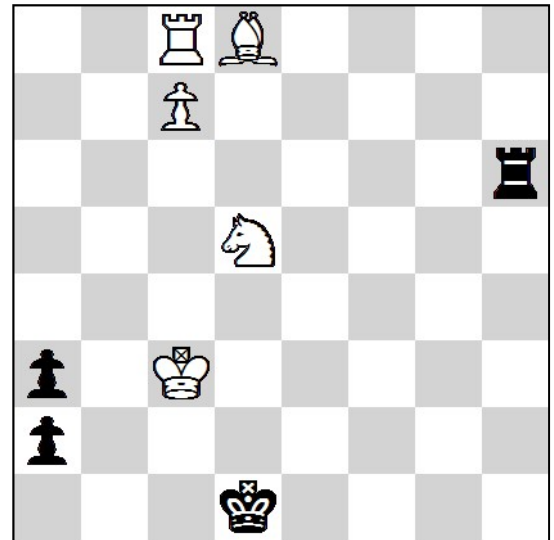
9.



#4

10 + 9

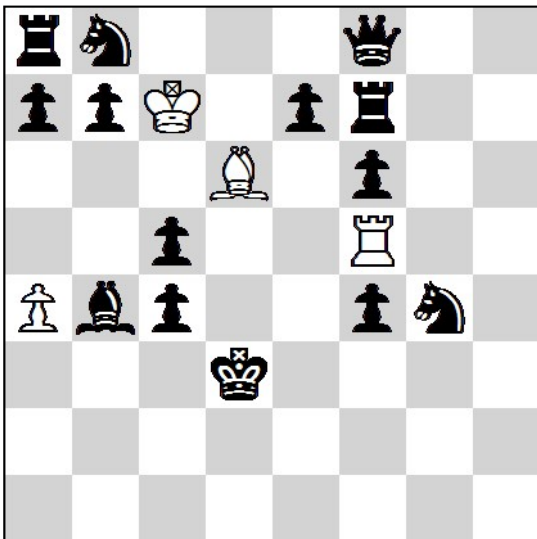
10.



+

5 + 4

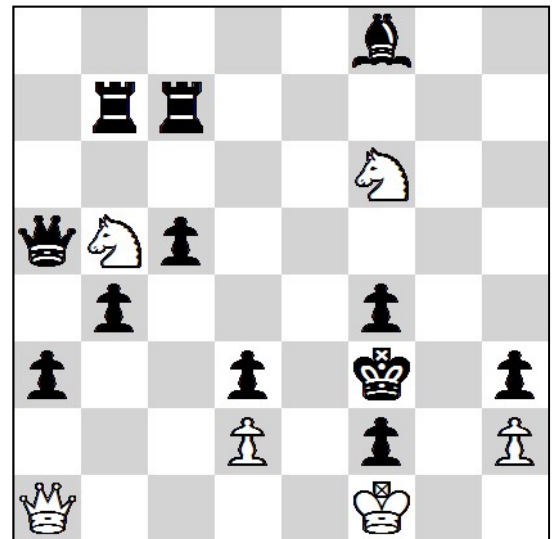
11.



H#3,5

4 + 14

12.



S#9

6 + 12

- a) Diagram
 b) ♠c4⇒d5
 (2.5 / 5)