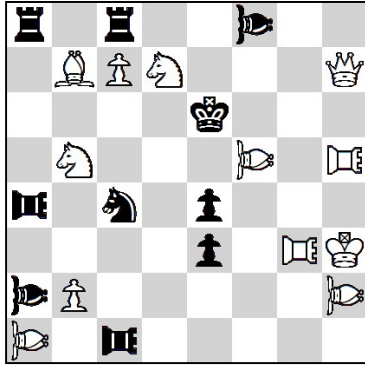


Fairy Solving – Jurmala WCCC 2024

Latvia, Jurmala 01.08.2024 - Round 1. (90')

1.



Jean-Marc Loustau, Sachova skladba 2003

1. ♖b3! [5] 2. ♗d5‡

1. b3? ♖c6!

1. ♗c2? ♖c3!

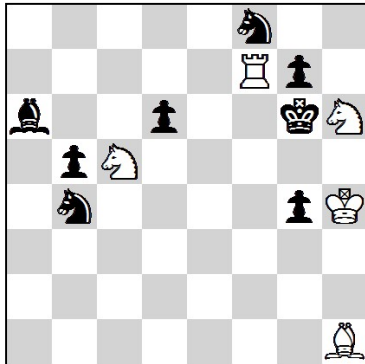
1. b4? ♗b6!

#2 12 + 10

♗♗ = Bishop-Lion

♖♖ = Rook-Lion

2.



Kevin Begley, The Good Companion Chess Problem Club 2001

1. ♗a8=♖! ~ 2. ♖af8=♗ [2] 3. ♖g7=♗‡

1. ... ♗c8 2. ♖a1=♗ [1]

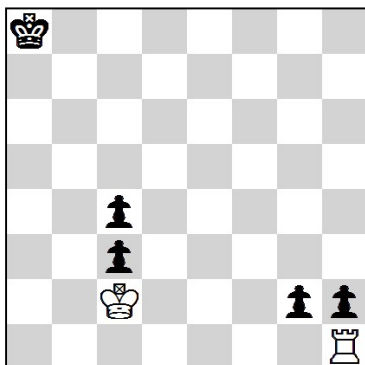
1. ... ♗h7=♗ 2. ♖h8=♗ [1]

1. ... ♗e6=♗ 2. ♗e6 [1]

#3 5 + 8

Chameleon Pieces f7, f8, h1

3.



Heinz Zander, Rochade Europa 1998-99

1.g1♖ ♗b2 2. ♖b1+ ♗a2 3. ♖b8 ♖g1 4.h1♗ ♖a1 5. ♗b7 ♗b1‡ [2.5]

1.g1♗ ♖h2 2. ♗a7 ♗c3 3. ♗b7 ♗b4 4.c3 ♖b2 5. ♗b6 ♗a5‡ [2.5]

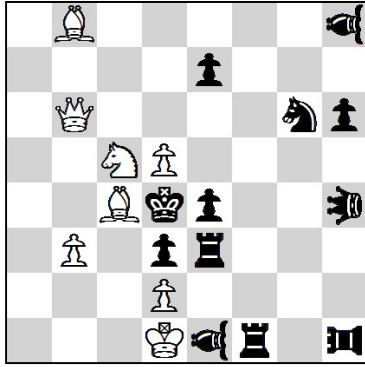
h#5 2 Solutions 2 + 5

Koe Ko

Fairy Solving – Jurmala WCCC 2024

Latvia, Jurmala 01.08.2024 - Round 1. (90')

4.



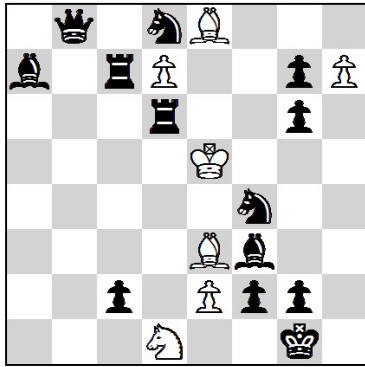
s#3 8 + 12

♘=Leo ♖=Pao
♚=Vao

Petko A. Petkov, The Problemist 1996

- | | | | | | | |
|---------|-----|---------|-----|---------|-----|------|
| 1. ♗b5! | ~ | 2. ♘a4+ | ♙d5 | 3. ♘c3+ | [1] | ♜c3‡ |
| 1. ... | ♜f6 | 2. ♘a6+ | ♙d5 | 3. ♘b4+ | [1] | ♜b4‡ |
| 1. ... | ♜e5 | 2. ♘e6+ | ♙d5 | 3. ♘f4+ | [1] | ♜f4‡ |
| 1. ... | e5 | 2. ♘d7+ | ♙d5 | 3. ♘f6+ | [1] | ♜f6‡ |
| 1. ... | ♙d5 | 2. ♗c6+ | ♙d4 | 3. ♜b4+ | [1] | ♜b4‡ |

5.



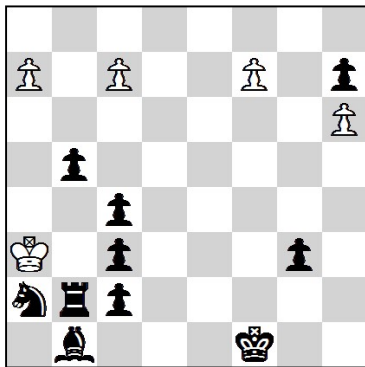
hs#3 2 Solutions 7 + 13

Anti Circe

Rene J. Millour, idee & form 2008-09

- | | | | | | | |
|---------|------|---------|-------------|--------------|-------|------------|
| 1. h8 ♗ | ♜b7 | 2. d8 ♜ | cxd1 ♜(♜a8) | 3. ♜xd6(♜a1) | [2.5] | ♜c1‡ |
| 1. h8 ♜ | ♜de6 | 2. d8 ♗ | cxd1 ♜(♜g8) | 3. ♗xc7(♗d1) | [2.5] | ♜xd1(♜a8)‡ |

6.



ser.s#13 Circe 5 + 10

Manfred Seidel, feenschach 1988

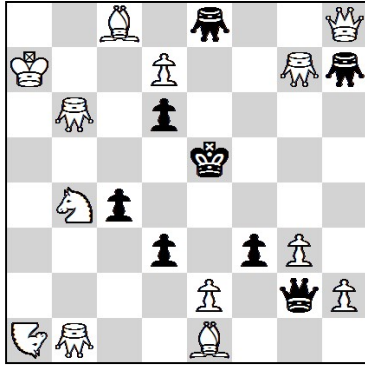
- | | | | | |
|--------------|---------|---------|--------------|-----------|
| 1. a8 ♗ | 2. ♗a4 | 3. ♗b3 | 4. ♗xa2(♜g8) | 5. fxg8 ♗ |
| 6. ♗xg3(♜g7) | 7. hxg7 | 8. g8 ♗ | 9. ♗xh7 | 10. ♗xc2 |
| 11. c8 ♗ | 12. ♗c5 | 13. ♗b4 | [5] | ♜b3‡ |

YACPDB#:339964

Fairy Solving – Jurmala WCCC 2024

Latvia, Jurmala 01.08.2024 - Round 2. (90')

7.



Imants Dulbergs, Phenix 2004

1. ♖c7+! [5]

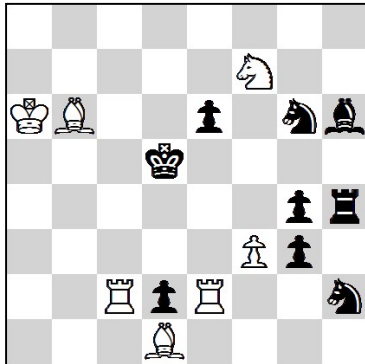
#2 13 + 8

Transmuted Kings

♖♗ = Grasshopper

♞ = Nightrider

8.



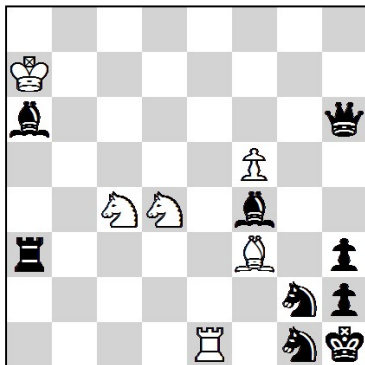
Hans Peter Rehm, T.T. Andernach 2006

1. ♖c8! ♞e7 2. ♖c3 ♗g7 3. ♖c7 ♗e5
 4. ♖e5(♖d6)+ [5] ♗d6(♗d3) 5. ♞e5‡
 ♗d6(♗d5) 5. ♗b3‡

#5 7 + 9

Take & Make Chess

9.



Wichard Von Alvensleben, Rochade Europa 1994-95

a) 1. ♖e3 ♗b7 2. ♞f3 ♞e3‡ @
 b) 1. ♗e2+ ♖a1 2. ♞h4 ♞e2‡ @

@	1	2
Pts.	2.5	5

h#2 Madrasi 6 + 9

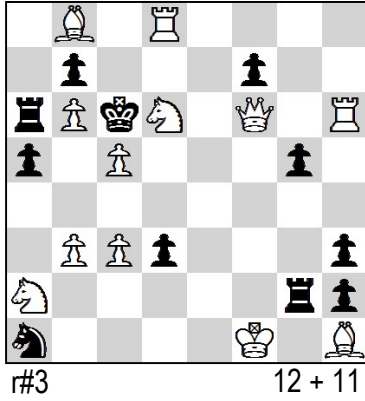
a) Diagram

b) ♞c4 ⇒ g6

Fairy Solving – Jurmala WCCC 2024

Latvia, Jurmala 01.08.2024 - Round 2. (90')

10.



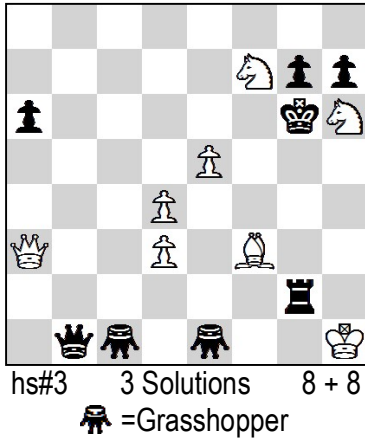
Kari Valtonen, The Problemist 2000

1. ♖h5!

- | | | | |
|--------------------------|------------------|--------|-----|
| 1. ... a4, ♘b3, ♜a8, ♜a7 | 2. ♘e4+ ♜b5 | 3. ♘f2 | [1] |
| 1. ... g4 | 2. ♙g2+ hxg2+ | 3. ♜f2 | [1] |
| 1. ... ♘c2 | 2. ♜f3+ ♜c5 | 3. ♜e2 | [1] |
| 1. ... ♜b6 | 2. ♜f2 ~ | 3. ♜g1 | [1] |
| 1. ... ♜d5, ♜c5 | 2. ♜d4+ ♜c6, ♜e6 | 3. ♜g1 | [1] |

YACPDB#:197323

11.



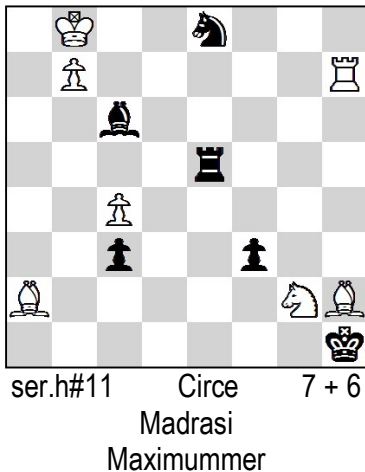
Petko A. Petkov, StrategGems 2008

- | | | |
|------------|------------|----------------|
| 1. ♜b2 ♜a3 | 2. ♜b7 ♜e3 | 3. ♜e4+ @ ♜e4‡ |
| 1. ♜b4 ♜a5 | 2. ♜b5 ♜c5 | 3. ♜c6+ @ ♜c6‡ |
| 1. ♜c1 ♜a2 | 2. ♜e1 ♜a1 | 3. ♜g1+ @ ♜g1‡ |

@	1	2	3
Pts.	1.5	3	5

hs#3 3 Solutions 8 + 8
♞ = Grasshopper

12.



Jaroslav Lunacek, Sachova skladba 1991

- | | | | | | |
|--------|---------|--------|---------|--------------|----------------|
| 1. ♜e1 | 2. ♜e7 | 3. ♙e4 | 4. ♙b1 | 5. ♘d6 | 6. ♘c4(♙c2) |
| 7. ♘e3 | 8. fxg2 | 9. ♘d5 | 10. ♘b4 | 11. ♘a2(♙f1) | ♙g2(♙g7) ‡ [5] |

ser.h#11 Circe 7 + 6
Madrasi
Maximummer