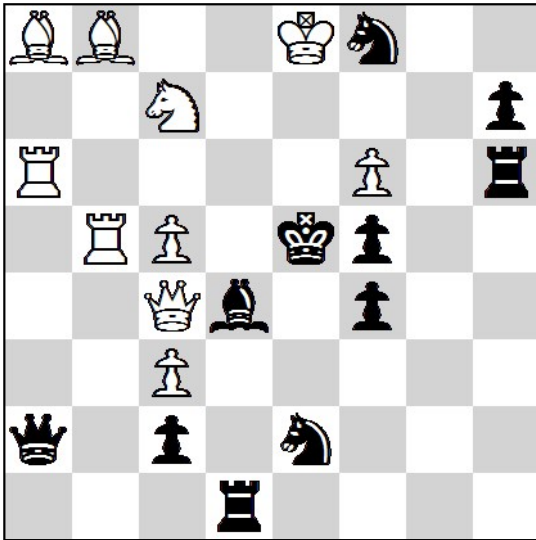


# 21st International Solving Contest 2025 Cat 1

19.01.2025 - Round 1. (120')

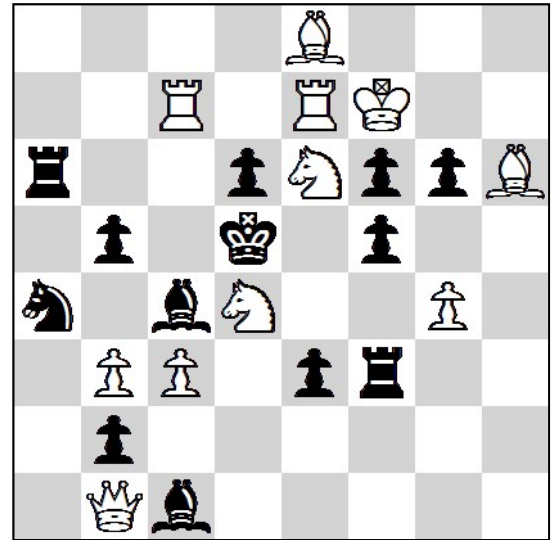
1.



#2

10 + 11

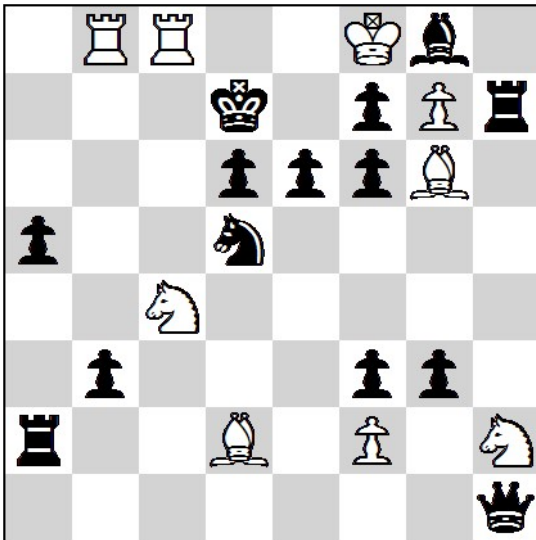
2.



#3

11 + 13

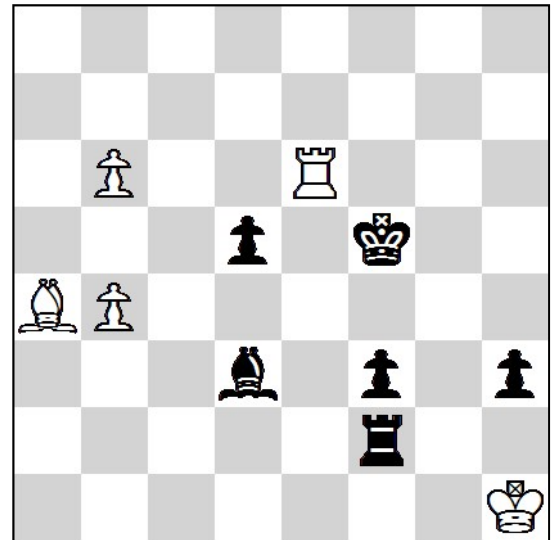
3.



#6

9 + 14

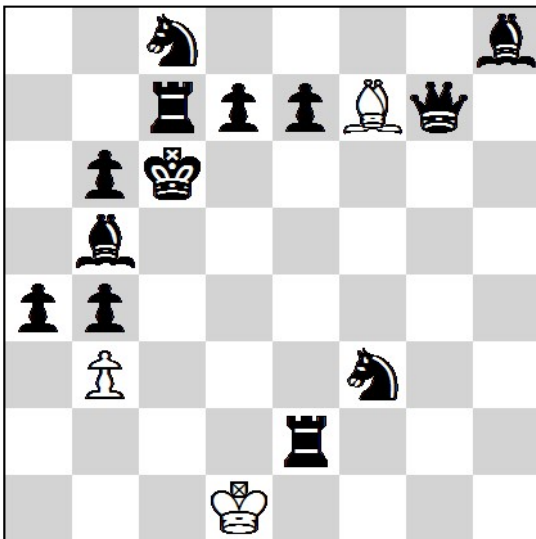
4.



+

5 + 6

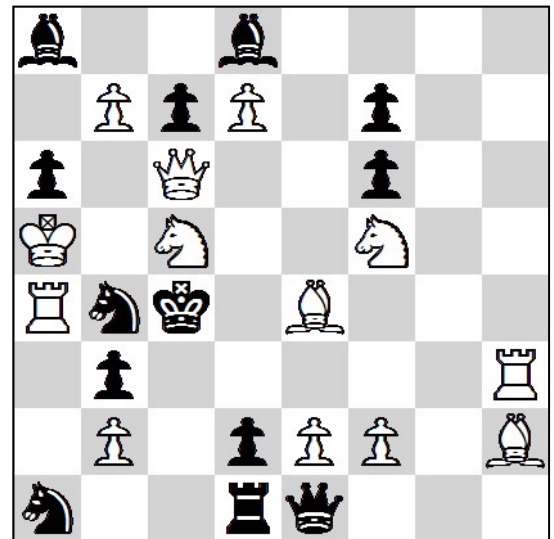
5.



H#4

3 + 13

6.



S#3

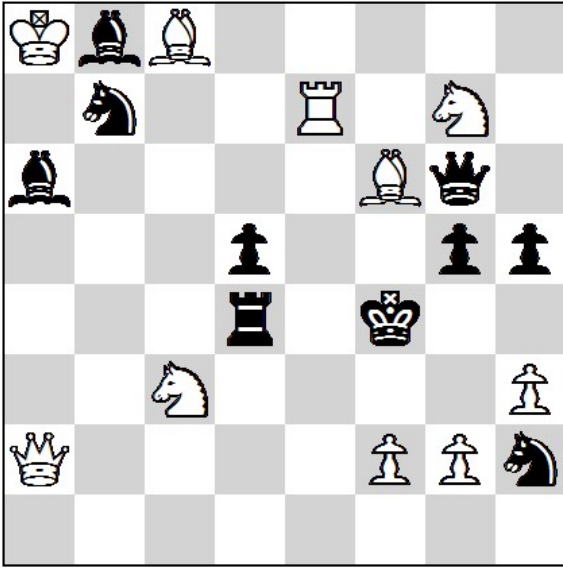
13 + 13

- a) Diagram
- b) ♠d7⇒d6  
(2.5 / 5)

# 21st International Solving Contest 2025 Cat 1

19.01.2025 - Round 2. (120')

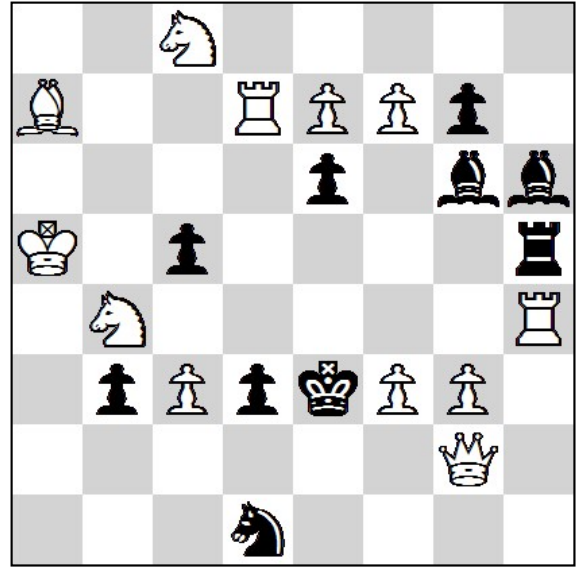
7.



#2

10 + 10

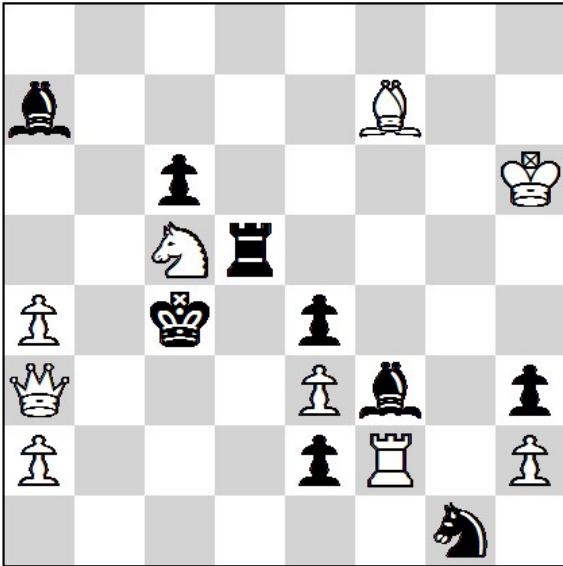
8.



#3

12 + 10

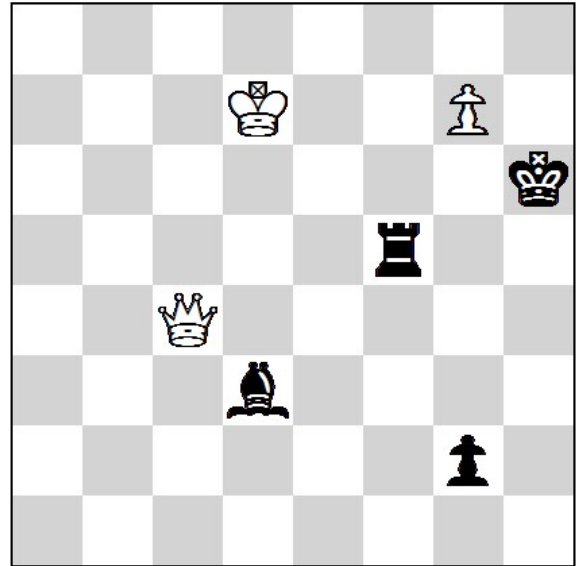
9.



#4

9 + 9

10.

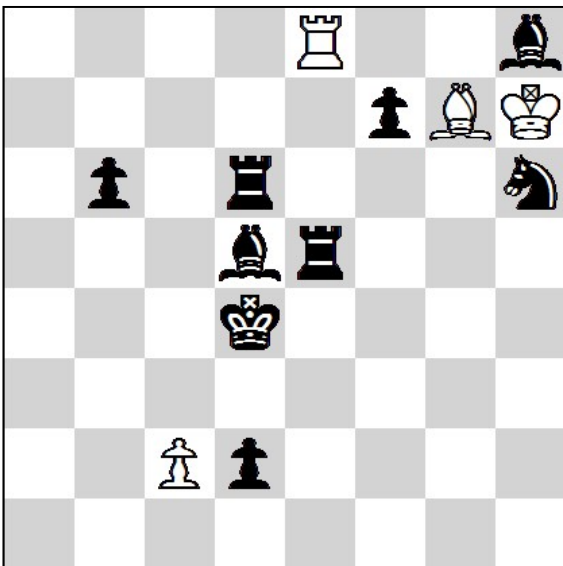


+

two main lines

3 + 4

11.



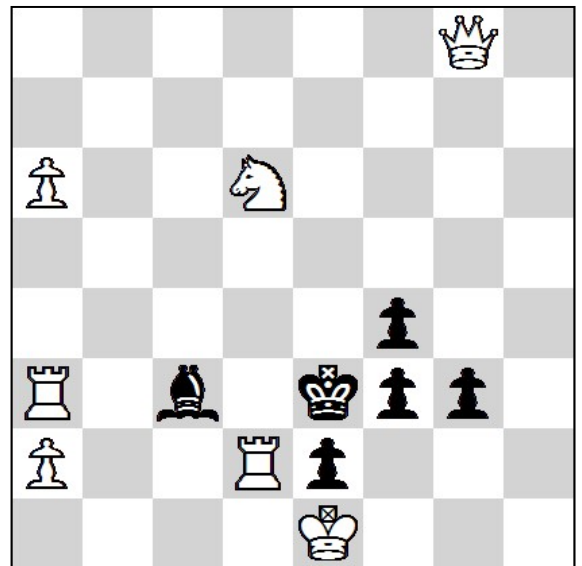
H#3

4 Solutions

4 + 9

(1.25 / 2.5 / 3.75 / 5)

12.



S#5

7 + 6